

2023 Impact Report





The new St Kilda Rd
Functional Seizures Clinic is the
first public clinic
of its kind in Australia



Extended clinical trial reach through our TrialHub Program

delivering potentially **life saving cancer treatments** by working with outer suburbs and regional hospitals



73,770

With almost **74,000** presentations,
The Alfred Emergency and Trauma
Centre is the busiest in the country



In a world-first study, for which
The Alfred is the Victorian lead,

3D skin imaging **technology and** **artificial intelligence**

is being used to significantly **improve**
the **early detection of melanoma**



Our Chief Executive

Professor Andrew Way AM



Throughout 2023, Alfred Health reinforced its commitment as a healthcare service for all Victorians. With the support of our passionate workforce, and you, our donors, we continue to be an internationally recognised leader in healthcare, dedicated to better health outcomes and improving patient experiences.

This year we focused on recovering, resetting and reforming our operations. This sense of renewal, helped by our growing culture of engagement, allowed the health service to learn from the COVID experience and focus on the new challenges ahead.

It also reignited the sense of innovation with projects in outpatients, surgery, general medicine and emergency care bringing together a mix of technology, systems and evidence-based practice that will change how and where we deliver care.

The Alfred Emergency and Trauma Centre continues to be the busiest in the country with close to 74,000 presentations; and we continue to operate Australia's largest and most acute Intensive Care Unit.

Deferred care, particularly for patients with complex and critical conditions such as cancer, has also been a clinical priority, addressing the urgent needs of patients and community.

Beyond this, we continue to innovate. Our Mental Health program started a physical health hub at the St Kilda Rd Clinic, while the new Functional Seizures Clinic is the first public clinic of its kind in Australia to support people presenting with psychogenic non-epileptic seizures – seizures that have a psychological origin rather than a physical one.

We continue to extend the care we offer well beyond metropolitan Melbourne, thanks to collaborations with services in places such as Bairnsdale, Central Gippsland, Horsham, Mildura, Bass Coast, Bendigo and La Trobe.

We have also extended the reach of clinical trials through our TrialHub program, delivering potentially life saving cancer treatments by working with outer suburbs and regional hospitals.

Evidence-based research and innovation remain a priority, so we can provide internationally recognised treatment to our patients. In a world-first study, for which The Alfred is the Victorian lead, 3D skin imaging technology and artificial intelligence is being used to significantly improve the early detection of melanoma.

We continue to work with key stakeholders – including governments of all levels – to ensure we can continue to deliver quality care in the years ahead. The Paula Fox Melanoma and Cancer Centre remains on target to open in 2024. Upon completion, it will bring together researchers, clinical care and treatment facilities while driving innovation in cancer research.

Thank you for your outstanding support over the past year; it is your support that allows us to continue to achieve extraordinary things for our patients. And thank you to our amazing staff. No matter what the challenge, their commitment to quality care has been resolute, and dedication to our patients unwavering.

Professor Andrew Way AM
Chief Executive

A handwritten signature in black ink that reads "Andrew Way".

Our Chair and Director



Sir Rod Eddington AO and Patrick Baker

To our valued supporters and members of The Alfred Foundation community.

As we present the 2023 edition of our Impact report, our heartfelt gratitude goes out to each of you for your unwavering commitment and support to The Alfred Foundation. This year your dedication has been a beacon of strength, allowing us to face challenges head-on and embark on transformative initiatives that have helped to shape the future of healthcare.

We are delighted to share the remarkable progress and pivotal projects that have unfolded throughout the year, showcasing the positive impact of your support.

A standout achievement has been the groundbreaking construction of the Paula Fox Melanoma and Cancer Centre – a testament to the power of philanthropy, led by the unwavering efforts of philanthropist Paula Fox AO. As we near completion of the project, we look forward to welcoming this new generation of cancer care at The Alfred in 2024.

We also welcomed the opening of our heart centre as we continue transforming care for Victorians. Demand for complex cardiac care services from day procedures to heart transplants has grown considerably during the past decade and this much needed refurbishment, supported by you, will ensure we address this demand.

These accomplishments are vivid examples of how your donations have elevated The Alfred, positively impacting not only our institution but the broader community within and beyond Victoria's borders. We express our profound gratitude for your generosity, recognising that each contribution has played a crucial role in making our hospital a leader of excellence in healthcare.

In a difficult economic environment, your steadfast support is even more appreciated, allowing us to continue delivering unparalleled care to the people of Victoria and beyond. The enduring partnership we share is a source of inspiration, and we eagerly anticipate the ongoing collaboration that will shape the future of healthcare at The Alfred.

Thank you for your continued support, commitment, and generosity. Together, we look forward to writing the next chapter of success and innovation in the years to come.

Sir Rod Eddington AO
Chair

Patrick Baker
Director

The Alfred Foundation Board

Sir Rod Eddington AO - Chair

Patrick Baker - Director,
The Alfred Foundation

Dr Ravi Bhatia

Anthony Charles

Allan Hood

Meg Landrigan

Chris Nolan - Alfred Critical
Care Appeal Committee Chair

Nicholas O'Donohue
- Life Support Committee Chair

Amanda Robertson

Paul Sheahan AM

Professor Andrew Way AM -
Chief Executive, Alfred Health

Volunteers

Dianne Dymond

Rhonda Moroney

Doreen Phillips

Uri Rosenberg

Sally Shuter

Congratulations to volunteer Di

Volunteers are an important presence at The Alfred, providing vital assistance, a tireless spirit, and a boost to all those around them.

Dianne Dymond has been that angel at the office of The Alfred Foundation.

Starting her journey at The Alfred in 2006, Di is one of Alfred Health’s longest serving volunteers. During that time, she has dedicated more than 5000 hours supporting families in the Intensive Care Unit, helping cancer patients, as well as The Alfred Foundation.

Di is known for her leadership, compassion and respect, coaching new volunteers and providing invaluable assistance. To recognise her immense volunteer work at The Alfred, Di was recently nominated as a finalist in the statewide Victorian Public Healthcare Awards.

Di was one of three nominees in the Health Volunteer/Team of the Year category, with the awards gala night held in November.



Di said it was a great shock to be nominated and to then be named as one of the top nominees for the award.

The entries received show that our public healthcare sector, workers and volunteers continue to innovate and deliver exceptional care led with compassion.

Our volunteers make such a difference and without Di’s contribution we would not run as smoothly as we do. If you see volunteers around, make sure to say hi.

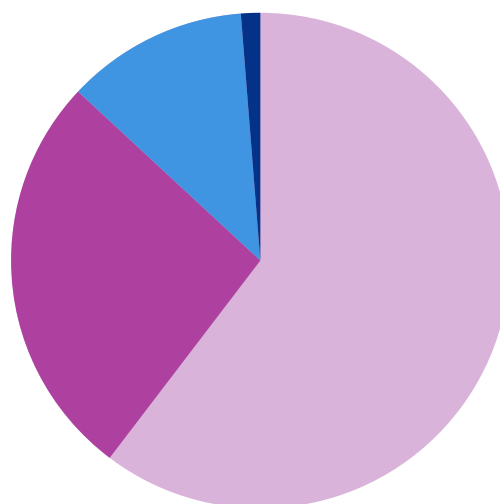
The Alfred Foundation 2022/23 financial year summary

Donations	\$8,861,430.76
Gifts in Wills	\$3,923,271.28
Trusts and Foundations	\$1,709,440.22
Corporate and events	\$173,657.33

Total income **\$14,667,799.59**

Total expenses **\$3,075,000.00**

Net income **\$11,592,799.59**





Associate Professor Tony Walton with the device used in the new valve clip procedure.

MARCH

[READ ARTICLE](#)

Breakthrough valve clip procedure offers new hope

An innovative procedure being performed in The Alfred's Heart Centre gives new hope to patients suffering from a life-threatening condition. Until recently, the only cure for Tricuspid Valve Regurgitation was open-heart surgery, ruling out older patients or those with co-existing health issues. The new procedure involves clipping the valve flaps together with a small device, representing a significant breakthrough in the treatment of this condition.



Dr David Anderson and Dr Sasha Richardson have taken ECMO life support to the streets in an Alfred Health and Ambulance Victoria-led trial.

MAY

[READ ARTICLE](#)

Melbourne dad saved by Australian-first trial

When 43-year-old Melbourne dad Mark Wohlers suffered a cardiac arrest in 2022, it was the swift emergency response and an Australian-first clinical trial that gave him a second chance at life. The Alfred and Ambulance Victoria-led trial saw Mark placed on extracorporeal membrane oxygenation (ECMO) to take over the function of his heart and lungs. While it has been used for years in the hospital, technological advancement meant the machines were now small enough to take to the streets.



MAY

[READ ARTICLE](#)

Alfred stroke team the first to receive certification in Victoria

The stroke team at The Alfred was delighted to be the first in Victoria to receive Australian Stroke Coalition Stroke Unit Certification. The Alfred has long been recognised nationally and internationally as a centre for excellence in advanced stroke care. The Alfred treats more than 500 stroke patients each year and its staff are constantly striving to excel in stroke standard of care.



Associate Professor Victoria Mar is leading the study.

JUNE

[READ ARTICLE](#)

World-first melanoma study to boost early detection

A world-first study, for which The Alfred is the Victorian lead, is using 3D skin imaging technology and artificial intelligence to significantly improve the early detection of melanoma for all Australians.

Creating the largest melanoma database worldwide, the data will be used to develop next-generation diagnostic and prognostic algorithms for the early detection of skin cancer. The Alfred is the first Victorian hospital to introduce the technology, which will play an integral role in the Paula Fox Melanoma and Cancer Centre from 2024.



AUGUST

[READ ARTICLE](#)

First-in-world endometriosis trial begins

Doctors from The Alfred Interventional Radiology team, designed a world-first study which will assess whether a procedure known as uterine artery embolisation (UAE) can be effective for women with endometriosis.

Endometriosis affects up to 10 per cent of Australian women and causes debilitating pain. Some women are left with no choice other than to have life-changing major surgery – a hysterectomy – to prevent further scar formation.

The procedure is regularly performed for other conditions such as fibroids, adenomyosis, or post-partum haemorrhage. However, it has never been used to treat women with endometriosis as an alternative to hysterectomy.



(L-R) Dr Ryan Hoy, the Hon. Danny Pearson MP, Glenn Turner, Dr Narelle Beer and Professor Ged Williams at the funding announcement.

AUGUST

[READ ARTICLE](#)

Specialist care extended for construction workers

An Australian-first clinic for construction industry workers exposed to silica or diagnosed with silicosis, a deadly lung disease, will continue for at least another three years.

The Alfred's Occupational Respiratory Clinic, which operates in partnership with Worksafe Victoria, is the only service of its kind in a public hospital.



Dr Kelly Bertram is head of movement disorders at The Alfred.

OCTOBER

[READ ARTICLE](#)

Shake It Up partners with Alfred Health to expand Parkinson's research

Australia will have the capacity to host more in-depth and innovative clinical trials for Parkinson's disease after Shake It Up Australia donated \$150,000 to develop a best-practice model at The Alfred.

The Neuroscience Clinical Trials Unit, Australia's only early-phase neuroscience clinical trials facility, will be refurbished with cutting-edge equipment. The upgraded centre will increase access to 'first-in-disease' therapies and accommodate multi-day patient stays. The aim is to create a blueprint for a nationwide Parkinson's clinical trials network.

Dr Kelly Bertram, head of movement disorders at The Alfred, hailed the refurbishment of the Neuroscience Clinical Trials Unit as an exciting moment for Parkinson's researchers and patients.



Geoff is receiving treatment with the new technology.

NOVEMBER

[READ ARTICLE](#)

New technology to enhance prostate cancer treatment

In an Australian first, a state-of-the-art treatment technology is raising the bar on prostate cancer care at The Alfred.

Treatment for high-risk prostate cancer – brachytherapy – is generally delivered via the temporary placement of a radiation source within the prostate to achieve high dose treatment within a matter of minutes. The radiation oncology team at The Alfred can now deliver it using new software that enhances the precision and continuity of treatment.

Heart Centre *redevelopment*

Alfred Health is the only health service in Victoria able to provide a full range of adult cardiac care.

From heart failure, to transplant, to rehabilitation, our cardiac specialists treat the most complex cardiac cases in Victoria. We strive to enhance our world-renowned research and treatments, establish cutting-edge facilities and revolutionise patient care.

To address increasing demands and uphold The Alfred's position as a leader in delivering advanced cardiac services, an ambitious revitalisation of the Heart Centre is close to being completed thanks to the incredible generosity of our supporters.

The centre cements The Alfred's first-class reputation for care. It includes leading equipment and technology, diagnostic suites, an increased

capacity for day procedures and a significantly improved patient experience.

The new centre will also support The Alfred's work as an international leader in complex cardiac care.

It treats outpatients who have referrals for tests as well as full heart procedures. With this newly refurbished cardiac catheter laboratory, our largest ever, we can continue to perform complex testing and advanced procedures to diagnose and treat deadly cardiac disease without the need for open-heart surgery.

Director of Cardiology at The Alfred, Professor David Kaye, said the demand for complex



“They are outstanding clinicians, outstanding researchers and, with this facility, they’ll be able to take it to the next level”

Mandy Gregory, cardiac patient and Alfred Health staff member





Professor David Kaye takes supporters through the new centre.

cardiac services, from day procedures to heart transplants, had grown considerably during the past decade.

“The much-needed expansion of our clinical facilities will enable us to address this increased demand,” he said.

The Heart Centre will continue to transform care for all Victorians.

“I am privileged to lead a team of outstanding caregivers whose commitment to making the impossible possible has led to ground-breaking innovations in cardiac care,” he said.

“We are proud to be a teaching hospital, and the education and training our medical professionals receive mean that the collective knowledge and wisdom of The Alfred team is passed on to the next generation, inspiring them to make the next breakthrough for our patients. Then we share our expertise with the world.”

One person who has a special insight into its capability is Mandy Gregory. Not just a member of Alfred Health staff since 1986, she has also suffered from heart disease and required the best care available – at The Alfred.

As Director Service Development and Clinical Projects at The Alfred, Mandy has been associated with this service for a long time.

“They are outstanding clinicians, outstanding researchers and, with this facility, they’ll be able to take it to the next level,” she said.

Mandy regards herself as incredibly lucky being associated with The Alfred – not only from a professional viewpoint. Her illness, coronary artery disease, was discovered in 2010 when at a budget meeting she was unexpectedly short of breath.

Upon Heart and Lung Program Director Professor Tony Dart’s urgings, some tests were performed. She was woken up during an angiogram and told that she had a 95 per cent blockage in her right coronary artery.

The diagnosis came as a shock to Mandy, having exhibited no symptoms.

“I’ve been incredibly lucky being associated with The Alfred,” Mandy said.

The Heart Centre has been made possible thanks to the unwavering support of our community and the extraordinary generosity of our donors. We would particularly like to acknowledge the Estate of Harry Sigmund Eichler, the Orloff Family Charitable Trust, Jeff Kaufman and the O’Donohue Family Fund for their commitment to this new era in cardiac care.

A new way of communicating

A new technology is having an immediate effect on patients' wellbeing at The Alfred. The Grid Pad 12 with Eye Gaze technology allows patients who are unable to communicate verbally a method to do so.

The purchase of the machine was a long-term project for the Neurology team at The Alfred, which will primarily help patients who may not be able to speak, either through paralysis or a brain injury.

The Eye Gaze has been used across Alfred Health, including the Intensive Care Unit, on the wards and at Caulfield Hospital. It provides high precision and accurate eye tracking for patients with an inability to verbally communicate. This allows patients to communicate the most basic needs that we take for granted.

Kate Lawlor, Speech Pathology Manager at The Alfred, said it was *"an incredible piece of equipment"*.

"In the past, speech pathologists have developed boards, or pieces of laminated paper with which we ask patients to show us what they are feeling, point to where they are in pain and a scale of how significant the pain is," she said.

"We also have a group of patients who are unable to use their upper limbs, so they are very restricted. This piece of technology allows patients to access communication through eye-gaze technology. They can look at a series of pictures on a computer screen, and it tracks where their eyes are looking and they can tell us what it is they need through predictive text or images."

The resulting impact of the machine on patients' mental wellbeing, and that of their families, was almost as significant as the ability to communicate itself, Kate said.

"Often these patients have no way of telling their families that they love them, or have an ability to participate in their care while in hospital," she said.

"Communication is absolutely essential to who we are as people and, when you lose that ability, having something give that back to you, even in a small form, it is so empowering."

The Grid Pad was funded primarily by the Angior Family Foundation.

"We were so lucky that The Alfred Foundation secured funding for that piece of equipment," Kate said.

The technology also allows for greater flexibility in use than just communication. For example, the eye-gaze technology allows patients to independently turn on the light or TV, watch YouTube or turn on fans if they are uncomfortable.

"The patient and family feedback ... is just so incredible. It gives them a glimmer of hope that the patient can communicate or participate in their care," Kate said.

A patient in The Alfred ICU, Jane O'Brien, described while using the technology that having the device was *"lifechanging"*.

"It has allowed communication with loved ones, being able to join in conversation," she wrote. *"Thank you for making such a difference to me. It is helping me recover, especially from a wellbeing, mental health perspective."*



“It has allowed communication with loved ones, being able to join in conversation ... It is helping me recover, especially from a wellbeing, mental health perspective.”

Jane O'Brien, patient in The Alfred ICU

Paula Fox *Melanoma and* Cancer Centre

An inspirational vision many years in the making, the Paula Fox Melanoma and Cancer Centre is set to officially open its doors in the coming months.



Paula Fox is a melanoma survivor.

The \$152.4 million project - supported by the Victorian Government, Australian Government, Monash University, Paula Fox and the Fox Family, Minderoo Foundation and other generous philanthropists - represents the ultimate in what can be achieved, bringing together researchers, clinical care and treatment facilities while driving innovation in cancer research.

Patients will gain greater access to world-class cancer care and clinical trials at The Alfred in a place that puts the patient at the centre of their care.

Associate Professor Victoria Mar, Director of the Victorian Melanoma Centre, said it was exciting to see how the development would drive further breakthroughs in cancer care.

"Melanoma is the most common cancer in Australia and Victoria, but detecting it early is the key to improving survival. If we can improve methods of

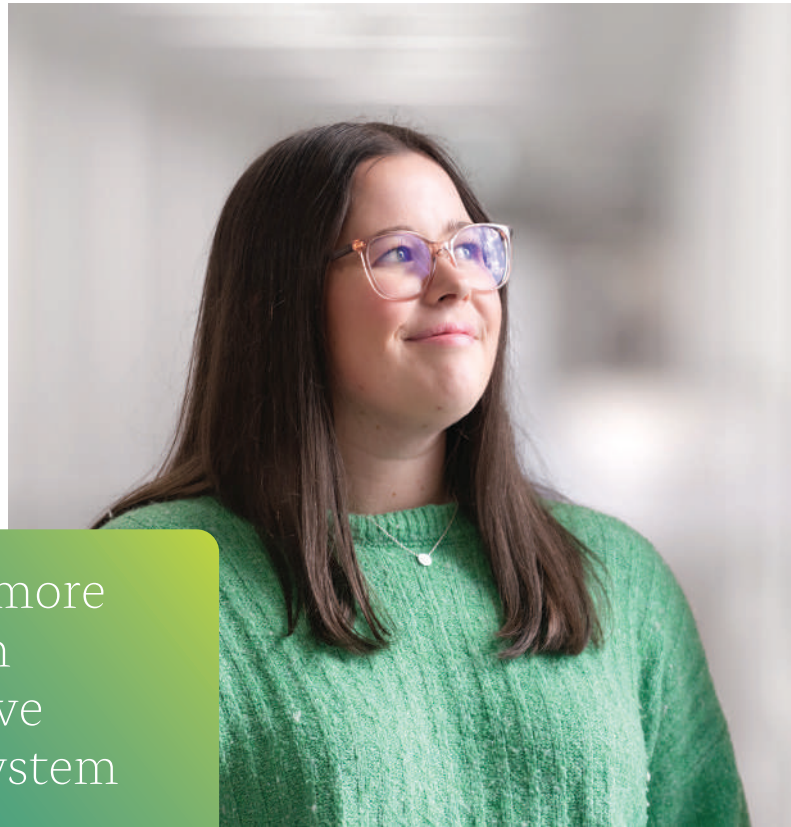
early detection, we're going a long way to beating this cancer," she said.

"What is so exciting about this centre is the investment in research and technology that has the capacity to change the way we deliver cancer care into the future."

As well as treatment and research, the facility will also house a world-leading wellness and education centre, reflecting the holistic and collaborative nature of cancer care.

"We want our patients to feel as comfortable as possible, while they are receiving the very best of care," Associate Professor Mar said.

The potential that this combination of research, patient care and clinical expertise in the one place has Director of Oncology at The Alfred, Professor Mark Shackleton, greatly anticipating what is to come next.



“I’ve never been more grateful to live in Australia and have the healthcare system that we have”

Hannah Humphries, melanoma patient at The Alfred

[VISIT WEBSITE](#)

[WATCH VIDEO](#)

“One thing that’s really impressed me throughout my career is the incredible importance of technology and infrastructure in enabling often quantum advancements in cancer care and treatment,” he said.

“That is what we are doing with this building. An amazing, high-quality infrastructure facility, providing care in all sorts of innovative ways, with world-class technology and world-class people – that will essentially drive the next advances in cancer care.”

Having all the services together will revolutionise the patient experience at The Alfred. Instead of coming to the hospital over multiple days, patients will be able to do it all in one visit. This is even more relevant for regional patients who often face long journeys just to get to The Alfred.

Hannah Humphries knows all too well how exceptional The Alfred’s work in melanoma is. By the time she was referred to The Alfred’s

Victorian Melanoma Service at age 22, she was diagnosed with Stage 3 melanoma and it had already spread to her nearby lymph nodes.

Two years after having the melanoma and her lymph nodes removed, a routine check found that the cancer had spread to her brain. She soon received radiation treatment and a week later had brain surgery to remove the tumour, which was all done at The Alfred.

“I’ve never been more grateful to live in Australia and have the healthcare system that we have,” Hannah said.

Along with the centre’s namesake Paula Fox and our wonderful community of donors, we are realising a vision. We are creating a place where researchers and clinicians work together, to bring cutting edge treatment to all patients. A place where patients can feel supported and welcome. A place that will save lives.

Alfred Health Nursing Scholarship

Alfred Health has been committed to nursing education since opening its doors in 1871, developing some of the most influential nurses in the country.

More than 4500 nurses work across a diverse range of roles at The Alfred. The care and dedication of our nursing workforce is crucial to the positive outcomes that so many of our patients experience.

To further support and develop nurses with a passion for improving healthcare, the Alfred Health Nursing Scholarship - Advancing Nursing Leadership was launched in 2018. The scholarship continues today, thanks to generous supporters HealthSmart Pharmacy, The Alfred Cafe and BankFirst.

The 2023 recipient, Cassie Abbott, has been the CAR-T (chimeric antigen receptor T-cell therapy) Clinical Nurse Coordinator since June 2022. CAR-T is a new treatment for certain types of blood cancers that uses a person's own immune cells to try to destroy cancer cells.

The scholarship allowed Cassie the opportunity to visit three hospitals in the US to observe their CAR-T processes and procedures, the patient journey, the flow of and the roles within the service, as well as find educational resources to bring back to The Alfred.

Visiting the University of California San Francisco Medical Centre, Stanford Health, and Massachusetts General Hospital in Boston for a

week each, Cassie was able to observe a variety of CAR-T programs that were all at different stages and sizes.

"It was great to see how the program is run at a larger scale, what roles are involved, who did what and how the patient pathway worked," she said. "This was very valuable for us as a new program, only starting at The Alfred in April 2022, understanding what we should be implementing and what we had already achieved."

The 30-year-old said the scholarship also resulted in a huge confidence-boost professionally.

"Not only was it the first time that I had travelled overseas by myself, but being able to go to these workplaces and have professional conversations with consultants, Fellows and nurse practitioners, it built my confidence that I deserved to be there and did know what I was talking about," Cassie said. "It was quite an eye-opener."

The scholarship is awarded to an emerging nurse leader in clinical practice, research, education, informatics or management. The aim is to advance nursing practice through clinical observation, research, education and leadership experiences, to share new ideas and concepts to nursing at Alfred Health.

"This is a great chance for staff to professionally develop but also improve the program they work in," Cassie said. "I would definitely encourage staff to apply and take advantage of this amazing opportunity that I hadn't heard about at other hospitals."

Thank you to our generous supporters for their ongoing commitment to nursing education.

WATCH VIDEO



“I would definitely encourage staff to apply and take advantage of this amazing opportunity that I hadn’t heard about at other hospitals.”

Cassie Abbott, CAR-T Clinical Nurse Coordinator



PROJECTS YOU FUNDED

Transforming care

- Paula Fox Melanoma and Cancer Centre
- Heart Centre Redevelopment
- Oncology patient transport
- Extracorporeal membrane oxygenation (ECMO) registry
- Artist in residence - psychiatric care
- Palliative care music therapy program
- Eating disorders program

Image: The Paula Fox Melanoma and Cancer Centre

PROJECTS YOU FUNDED

Leading technology

- Grid Pad 12 with Eye Gaze technology
- TOE transducer for anaesthesia
- Cardiac ultrasound machine
- Electromyography (EMG) machine
- Anaesthesia trauma equipment (videolaryngoscope package and two ultrasound packages)
- Paediatric cart for Emergency Department
- Intra-aortic balloon pumps x 4
- Weighing device for ICU
- Laser Doppler - burns scar therapy equipment

Image: Grid Pad 12 with Eye Gaze technology





PROJECTS YOU FUNDED

Advancing discovery

- The Alfred Cancer Biobank
- Fluorescent microscope for cancer research
- Myeloma research
- Clinical haematology research

Image: The Alfred Cancer Biobank

PROJECTS YOU FUNDED

Developing extraordinary caregivers

- The Jenkins Fellowship for Lymphoma
- Nursing scholarship
- P.A.R.T.Y (Prevent Alcohol and Risk-Related Trauma in Youth) Program
- Castan ICU Fellowship
- Bambery Family Fellow in Myeloma
- Roberts Family Lymphoma Research
- Tegner Myeloma Fellow
- LEB Foundation Myeloma Fellow
- White Family Melanoma Research Fellow

Image: Inaugural Castan ICU Fellow, Paul Ross



Thanks to our supporters

Financial year 2022-2023

LIFE PATRONS

Di Bertalli
Neville Bertalli
Andrew Forrest AO
Nicola Forrest AO
Lindsay Fox AC
Paula Fox AO
John Gandel AC
Pauline Gandel AC
Gerry Ryan OAM
Val Ryan

TRANSFORMATIONAL DONORS

The Alfred Intensive Care Foundation
Muriel May and Leslie Talbot Batten Foundation
The Percy Baxter Charitable Trust
Neville and Di Bertalli
James and Elsie Borrowman Trust
The William Buckland Foundation
Bulla Family Dairy
Collier Charitable Fund
Ian and Maria Cootes
Erdi Foundation
The Marian and E H Flack Trust
Fox Family Foundation
Gandel Foundation
Estate of Constance Olivia Hunt
John F Marriott Charitable Trust
Merrin Foundation
Minderoo Foundation
Orloff Family Charitable Trust
The Margaret Pratt Foundation
The Ian Potter Foundation
Helen Macpherson Smith Trust
Swiss Concept Australia
Norman Clyde Wellington
Joe White Bequest
Whole Time Medical Specialists
The Yulgilbar Foundation

PRINCIPAL DONORS

Jeff Kaufman
NatWes Foundation
John Renison

TOP DONORS

A&J Australia
The Andrews Foundation
The Angior Family Foundation
Bambery Family
Bamford Family Foundation
Bank First
Bill Tingate Brain Cancer Foundation
John Boykett
Eva and Tom Breuer Foundation
Robert C Bulley Charitable Fund
Colin Disseldorp
Dry July Foundation
Sir Rod Eddington AO
Roy Edwards
Andrew Eger
Alan Finlayson
Fortune Beancurd Manufacturers
Gras Foundation
Hardman Family Fund, a sub fund of ACF
G R and L D Hastings
Andrew Hay
In memory of Matthew Higgs
The Highland Foundation
Grimwade Holborow Trust
The Holckner Family
Peter and Mandy Hui
Timothy Jones
K&N Company
Kiriwina Investment Company
L.E.B. Foundation
Lewis Family Trust in Memory of Peter John Lewis
Lungitude Foundation
Angus Mackay

Danielle Meyer
Vincent Murphy
Mutual Trust Foundation
O'Donohue Family Foundation
The Barbara Luree Parker Foundation
David Roberts, Mt Aspiring Cancer Foundation
Shake It Up Australia Foundation
Greg Shalit and Miriam Faine
Sheehan-Birrell Foundation
Judith Stemberge
Norman and Renee Super and Family
Charles Tegner
Ken and Helen Turnham
Sylvia and Charles Viertel Charitable Foundation
Kevin and Nancy Wood and Family

MAJOR DONORS

Anna and Bruce Allworth
The Bagot Gjergja Foundation
The Will and Dorothy Bailey Charitable Fund
Patricia and Kevin Birkett
Julia Breen
Merrilyn and Tony Centra
Wendy Cheung
Raymond Corrigan
Andrew Czarnecki
Alfred and Jean Dickson Foundation
Jan Drinkwater
Noelle Garner and Eric Garner AM
CM Gray Trust
Michael K Halprin
Hewison Family Foundation
Leonie Hosking
JB Were
Mary Jeffery
Dorae Jesberg
Alfons and Gertrud Kaiser
King Family Foundation

MAJOR DONORS CONT.

John Lee
Cheng Lim
Luan Mai
Morgan Mansell Fund, a sub fund of ACF
Gordon Miller
Ministry of Art
Ian Paroissien
Adele M Pernell
Brian and Linda Randall
Relton Co
Jan and Keith Richards
June Smith
Lady Marigold Southey AC
Graham Spring OAM
Tri-Tech Chemical Company
Andrew Wheatland
Lyn Williams AM
Ronald Wong
Ben Zehnwirth

GIFTS IN WILLS

Estate of Dr Mark Ashkenasy
Joseph Augen Trust
Estate of Edna Baker
Estate of Nancy June Balding
Estate of Lindsay James Baldy
Estate of Arthur and Anne Barry
Estate of Amelia Batten
Estate of Raymond Maxwell Batty
Estate of Lionel John Beaton
E C Blackwood Charitable Trust
Major Arthur Lyndhurst
Blannin Estate
Nola Therese Bren Donation
The Alfred and Sophia Bright Memorial Fund
Estate of Ernest Lonsdale Brown
Estate of Mary Burbidge
Estate of Dorothy Isabel Buttle

Dennis Osborne Clarke Charitable Trust
Estate of Alfred Noel Curphey
Estate of Philippe Andrey Davies
Estate of Mary Ann Edwards
Estate of Leon Anthony Fennessy
The Helen Fookes Trust
The James Foster Foundation
Grace and Herbert Foulkes Charitable Trust
Estate of Mary Ann Gabriel
Estate of John Gaidzkar
William Samuel Godfree Charitable Trust
Estate of Mary Evaline Godridge
Estate of David William Graham
The Grant Bequest
Jean and Gerrard Harper Bequest
Estate of Bernard Otto Heid
John Henry Charitable Trust
Estate of Alan Leslie Hockham
Estate of Geoffrey Lawson Hook
Estate of Grace Horton
Wilfred Gordon Hunt Foundation
Estate of Dorothy Maude Johnson
Estate of William Maxwell Jones
Estate of Ernest John Kebby
Estate of Maria Gerarda Knoops
Joseph Kronheimer Charitable Fund
Joan Lavender Charitable Trust
Martha Miranda Livingstone Fund
Estate of Bruce Malcolm Logan
The Sarah Josephine Logue Memorial Fund
Estate of Shirley Margaret Loxley
Estate of Charlotte Marshall
Estate of William Marshall
John Robertson Grigor and Mrs Eva McKenzie Bequest
Estate of Edith McTaggart
Estate of Othni and John Michell

Eugene and Janet O'Sullivan Memorial Fund
Estate of Mary Alice Palmer
Estate of Kenneth Charles Pride
James Richardson Medical Research Foundation
Estate of Danuta Rogowski
The Geoffrey Mallin Rollason Trust
Mr and Mrs Simon Rothberg Charitable Trust
Estate of Heinz Max Rummel
The Valda Salton Charitable Trust
Sartori Medical Research Fund
Vladimir and Georgia Selar Bequest
Estate of Barbara Grace Shadbolt
Estate of William Arthur Shipperlee
Estate of Heather Sybil Smith
The Yvonne Patricia Stevens Family Trust
John Henry James Symon Charitable Trust
Mary Symon Charitable Trust
Estate of Alice Letitia D'Esterre Taylor
Flora Louisa Thompson Charitable Trust
Estate of William Eastwood Thompson
The Gary Thomson Endowment
Estate of Shirley Tower
Eliza Wallis Charitable Trust
Annie Josephine Wellard Charitable Trust
Sydney Maxwell Wellard Charitable Trust
Estate of Edel Wignell
Estate of Heather Merle Williams
Estate of Emily Vera Winder
Charles Wright Charitable Trust
Estate of John Frederick Wright

Team Alfred

At The Alfred Foundation, we are fortunate enough to see the incredible dedication committed by staff, patients and supporters.

2023 was no different, with a huge outpouring of support across a wide range of events and activities. But what is it that binds all of this together?

Every single one of us is part of Team Alfred. More than just a name, it represents everything that we aspire to. At the Foundation, community fundraising is not just a part of what we do – it's at the core of our mission and work ethic. We believe that building a healthier world requires the collective strength of our community.

This strength and commitment has been demonstrated to great effect by our incredible supporters. The efforts range from the gargantuan: like brain cancer patient Anthony Moffatt cycling 4000km along the eastern coast of Australia, raising funds for Alfred Brain; to the community spirit of Run Melbourne, where 151 runners helped raise almost \$34,000; to Alba Chliakhtine, who raised more than \$2600 asking loved ones for donations in celebration of her birthday.

All of these are significant and contribute. It is not just about raising funds; it's about creating a community-driven ecosystem where everyone

contributes to the success of our mission. Community fundraising can be whatever the individual wants to do to support us, through raising funds no matter the size or effort – anyone can contribute and make a difference.

Professor Terry O'Brien, Alfred Brain Program Director and Alfred Health Deputy Director of Research, said it was inspiring to see the level of commitment exhibited by people supporting The Alfred.

"It makes me very proud that they value the unique service we provide to the Victorian and Australian community, so much that they want to give time, effort and money to support us so we can continue to provide that service and make it even better for patients in the future," he said.

Being entrusted to direct any funds raised for Alfred Brain to where it will have the best impact is something in which Prof O'Brien takes the utmost care.

"Patients are grateful for the care they receive from The Alfred and Alfred Brain and want to give that support back," he said.





Representatives of Team Alfred were at many events throughout 2023.

"We try to line that up with the area that they have an association with. So for someone like Olivia Miles, who has drug-resistant epilepsy, when she raises money we put it towards epilepsy care or research in that particular area to improve treatments for patients with this disabling and dangerous condition."

Witnessing first-hand the devotion of all members of Team Alfred has only reinforced Prof O'Brien's admiration of The Alfred and the world-class care that it provides.

"People come from all over the state and even the country to get that care here," he said. "They are getting specialist care here at The Alfred that is equal to the best in the world and I think that they feel very grateful to be able to come here."

Our community fundraisers all have their own motivations and inspirations for supporting the hospital and the funds they raise can be directed to any area of the hospital they wish to support.

Olivia Miles (right) is incredibly thankful for all the support and care that she has received at The Alfred.



Distance is not a *barrier*

The Alfred has long been known for its support and care for people not only throughout Victoria, but across the country.

Our world-class standard spans many fields, including that of lung transplantation. Since our first surgery in 1990, almost 2000 lung transplants have been performed.

It was a far from ideal situation for Shirley Tower. It was 2001 and the lung capacity of the 54-year-old was extremely low, thanks to a condition she'd had since she was a young girl.

Not only that, Shirley was living in Perth, thousands of kilometers away from the potentially lifesaving treatment that she needed. Given the opportunity, Shirley and her husband Robert made the tough decision to move to Melbourne to be close to The Alfred hospital and be prepared for an operation to save her life. For Robert, it meant giving up his career to become a full-time carer.

Put up in an apartment on Beaconsfield Parade in St Kilda, the couple patiently waited for 15 months, with the distance from her two daughters, Nat and Julz, and the rest of their family and friends especially trying. However, it was worth it.

A successful surgery was followed by three months of post-operative care before returning west. Shirley enjoyed a further 20 years of life experiences thanks to this amazing service – a time which she made full use of.



Shirley Tower received a lung transplant at The Alfred.

"A really positive lady, she woke up every day grateful," Julz said. "She never thought she'd see us (Julz and Nat) getting married, four grandchildren, the grand dogs."

A love of travelling meant Shirley and Robert went on 13 cruises and travelled around Australia "five or six" times.

But they never forgot what The Alfred had done for them, with the connection spanning the huge distance.

"She was overwhelmingly grateful and supportive," Nat said. "It is honestly incredible. The family as a whole, we got flown over there to come see Mum. They paid the rent ... it's absolutely incredible what this country and The Alfred does."

"That's why they gave the donation, they are both just so grateful that they got an additional 20 years. She was very brave and humble all the way to the end."

As part of a gift in her Will, Shirley donated money to The Alfred's respiratory medicine department, to support research to increase availability and optimise outcomes for lung transplantation.

[VISIT WEBSITE](#)

What's on in *community* events



JULY

Run Melbourne

Get ready to embrace the challenge of running through the city of Melbourne. Have friends and family sponsor you for Run Melbourne, with events for 5.2km, 10km and half-marathon distances in July.

Every donation makes a difference to patients at The Alfred.



JULY

Dry July

Alfred Cancer provides world-class cancer treatment, care and compassion to the people of Melbourne and Victoria. Each year, The Alfred treats thousands of people living with cancer.

By joining Team Alfred this Dry July, you will help raise funds for projects including patient transport, scalp cooling equipment to help reduce hair loss during chemotherapy, patient wellbeing and music therapy for people affected by cancer.



OCTOBER

Melbourne Marathon

Looking for the ultimate challenge? Join thousands of others and make a difference as you run, jog, wheel or walk your way through the city streets, passing iconic Melbourne landmarks before finishing with a lap of honour around the MCG's hallowed turf.

Get a team together or take on the challenge solo at the Melbourne Marathon, taking part in the 3km, 5km, 10km, 21.1km or full marathon events in October.

WHAT'S ON

Stay up to date with all of our events throughout 2024.

[VIEW EVENTS](#)

Follow us online



[VISIT PROFILE](#)



AlfredHealthTV

@AlfredHealthTV

News and vodcasts from Alfred Health

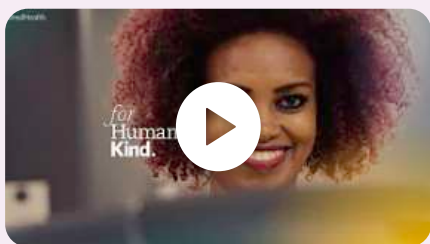


How to check for spots: the ABCDE of Melanoma

We're urging you to check your skin, help a loved one check theirs, and get spot safe.

Check for Spots Day is a reminder to 'be all over melanoma' in memory of 25 year old Morgan Mansell, who sadly lost her life to this mostly preventable disease.

Suggested videos



Healthcare for all Victorians - for Human, Kind.



P.A.R.T.Y returns to The Alfred



International clinical trials day 2023

facebook

VISIT PROFILE



The Alfred Foundation
@thealfredfoundation

The Alfred Foundation
24 April 2023 · 🌐

We recently celebrated a special reunion between Alfred ICU Intensivist Maurice, and one of our former patients and kind supporter of The Alfred, Gary.

Gary was admitted to The Alfred four years ago after he suffered a cardiac arrest while riding his bike in Bayside Melbourne. Maurice happened to be in the group riding behind Gary and was able to stop to perform CPR until paramedics arrived, which Gary was told saved his life.

The pair met again to celebrate Gary's 70th birthday and share in a mutual love of cycling and travel, which Gary is still enjoying thanks to the care he received at The Alfred.

As a measure of their gratitude, Gary and his wife Jane have included The Alfred in both their Wills. In doing so, they are helping to ensure the excellent care Gary received will be there for others. For more information about leaving a gift in your Will to The Alfred, reach out to Feygl or Sue at giftinwill@alfred.org.au.



The Alfred Foundation
28 November 2023 · 🌐

The Alfred Foundation team were thrilled to be able to host their wonderful Gift in Will supporters for an annual thank you event at the hospital this year.

Guests were treated to an update of exciting Foundation projects and endeavours together with an eye opening 'AI and the future of Healthcare' presentation from Professor Meng Law, head of Radiology at The Alfred.

If you'd like to chat about leaving a gift to The Alfred in your Will, feel free to contact Sue or Feygl on 9076 3222.



Instagram

VISIT PROFILE



The Alfred Foundation
@thealfredfoundation



Liked by mezzieryan and others

thealfredfoundation The Alfred Critical Care Appeal pre-launch kicked off this morning with a free breakfast for staff at The Alfred.... more



Liked by acquaint_melbourne and others

thealfredfoundation In an Australian first, the ICU at The Alfred is now home to a mobile CT scanner, allowing specialists to quickly... more

2022-23 statistics

FAST FACTS



10,612
employees



121,419
emergency presentations



18,111
ICU occupied bed days



127,475
acute separations



10,015
elective surgeries performed
from waiting list



282,787
specialist outpatient
appointments



606
clinical trials open

THE TEAM PERFORMED:



24
Heart transplants



69
Lung transplants



4
Paediatric transplants



11
Ventricular Assist Device
(VAD) implants

ICU PATIENTS TREATED



763
Regional Victoria



248
Interstate and
overseas

ED PRESENTATIONS

73,770
The Alfred
(2021-22: 70,078)



121,419
Alfred Health inc SACC
(2021-22: 115,784)

47,649
Sandringham inc SACC
(2021-22: 45,706)

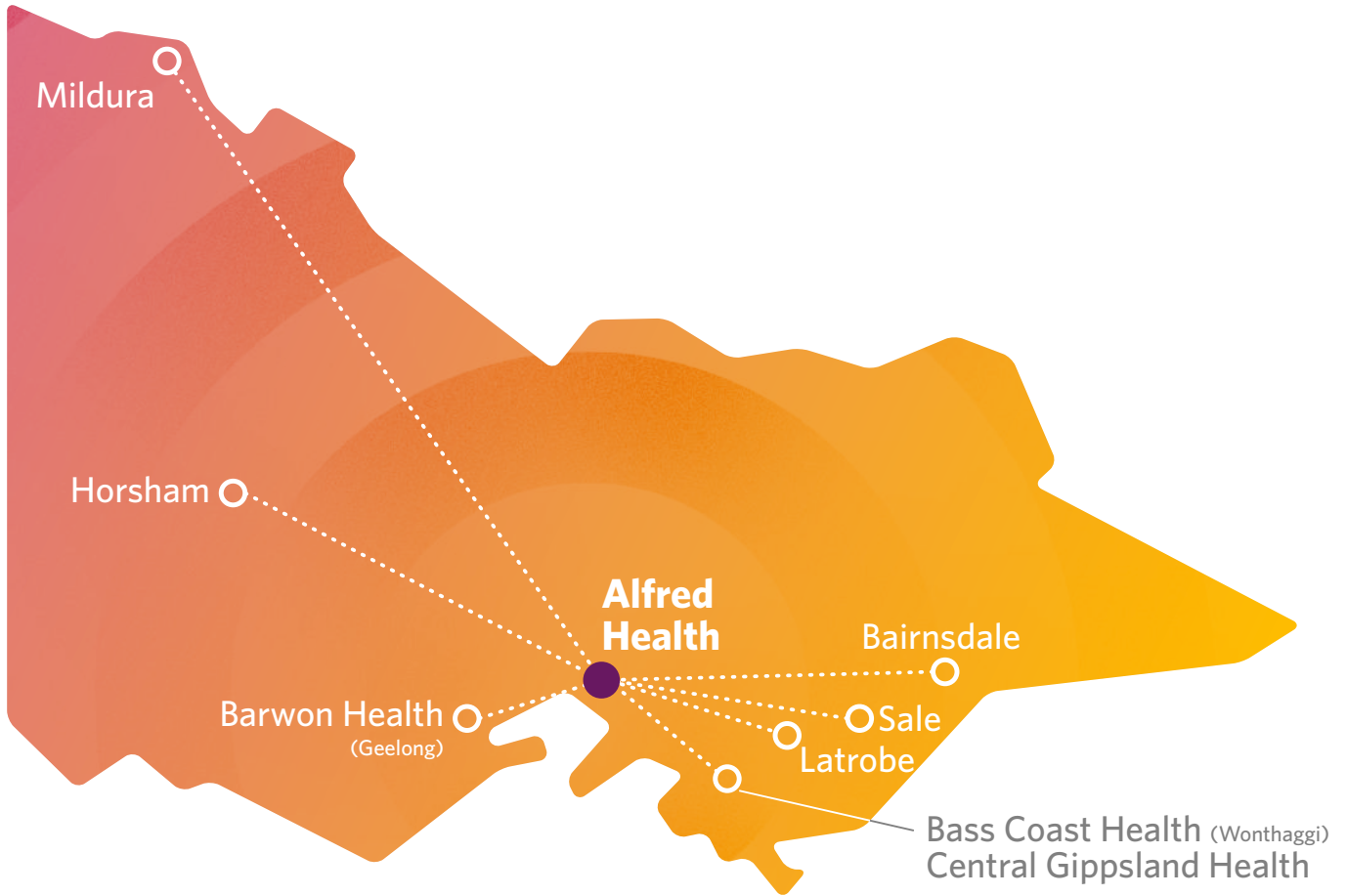


5982
Brain separations
(2021-22: 5660)



18,279
Cancer separations
(2021-22: 16,791)

Who we care for



STATEWIDE SERVICES

We provide the most comprehensive range of adult specialist medical and surgical services in Victoria.

We offer almost every form of medical treatment across our multiple sites and three hospital campuses.

- Bariatric Service
- Clinical Haematology Service and Haemophilia Service
- Cystic Fibrosis Service
- Heart and Lung Transplant Service
- Hyperbaric Medicine Service
- Major Trauma Service
- Malignant Haematology and Stem Cell
- Problem Gambling and Mental Health
- Psychiatric Intensive Care Service
- Sexual Health Service
- Specialist Rehabilitation Service
- Victorian Adult Burns Service
- Victorian HIV/AIDS Service
- Victorian Melanoma Service
- Victorian Neuropathology Laboratory Service
- Voluntary Assisted Dying Statewide Pharmacy Service
- Victorian ECMO service (VECMOS)

NATIONAL SERVICE

- Paediatric Lung Transplant Service

[WATCH VIDEO](#)

Thank you to
our corporate *sponsors*



THE
ALFRED CAFE



bankfirst
invested in you



For more information about corporate partnerships or how your business can support The Alfred, please email Nairn Miller at n.miller2@alfred.org.au



Make the **impossible** *possible*

Make a difference with a donation
to The Alfred Foundation.

[MAKE A DONATION](#)



The Alfred Foundation

PO Box 2021

Prahran VIC 3181

T: [1800 888 878](tel:1800888878)

Find us online

[🌐 alfredfoundation.org.au](http://alfredfoundation.org.au)

[📘 thealfredfoundation](https://www.facebook.com/thealfredfoundation)

[📷 thealfredfoundation](https://www.instagram.com/thealfredfoundation)